

The Ashtons logo is displayed in white text on a dark blue rectangular background in the top right corner of the image.

30 Bellerby Court Palmer Lane Hungate YO1 7AF

£1,675 Per Month

2



2



1



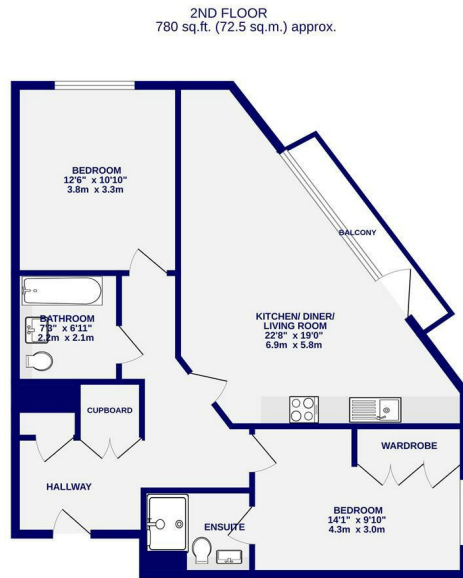
B



A contemporary two bedroom apartment, part of the Hungate development in the heart of the city centre. Offered on a fully furnished basis, the apartment comprises of entrance hallway with utility cupboard; spacious open plan living kitchen with french doors out to the balcony overlooking the city and a kitchen equipped with integrated appliances; primary bedroom with ensuite shower room; second double bedroom and bathroom with shower over bath. There are also the advantages of an entry phone system, double glazing, underfloor heating, and an internal air purification system. Outside the development a the delightful communal garden.

No onsite parking however there are car parks within a few minutes walk for which season passes can be obtained by seperate arrangement.

Available 1st August / 12 Month Tenancy / Deposit £1775 / EPC Rating B / Council Tax Band D



TOTAL FLOOR AREA: 780 sq.ft. (72.5 sq.m.) approx.
While every effort has been made to ensure the accuracy of the floorplan, measurements of rooms and any other areas are approximate. It should be noted that the floorplan is not intended to be used as a legal document. The actual layout, fixtures and fittings may vary slightly from those shown on the floorplan. The actual layout, fixtures and fittings may vary slightly from those shown on the floorplan. The actual layout, fixtures and fittings may vary slightly from those shown on the floorplan.



Ashtons Lettings



01904 731404



lettings@ashtonsnet.com

